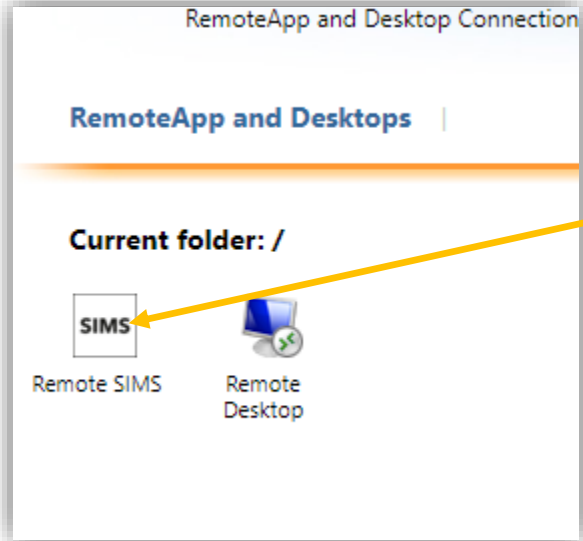


Remote SIMS



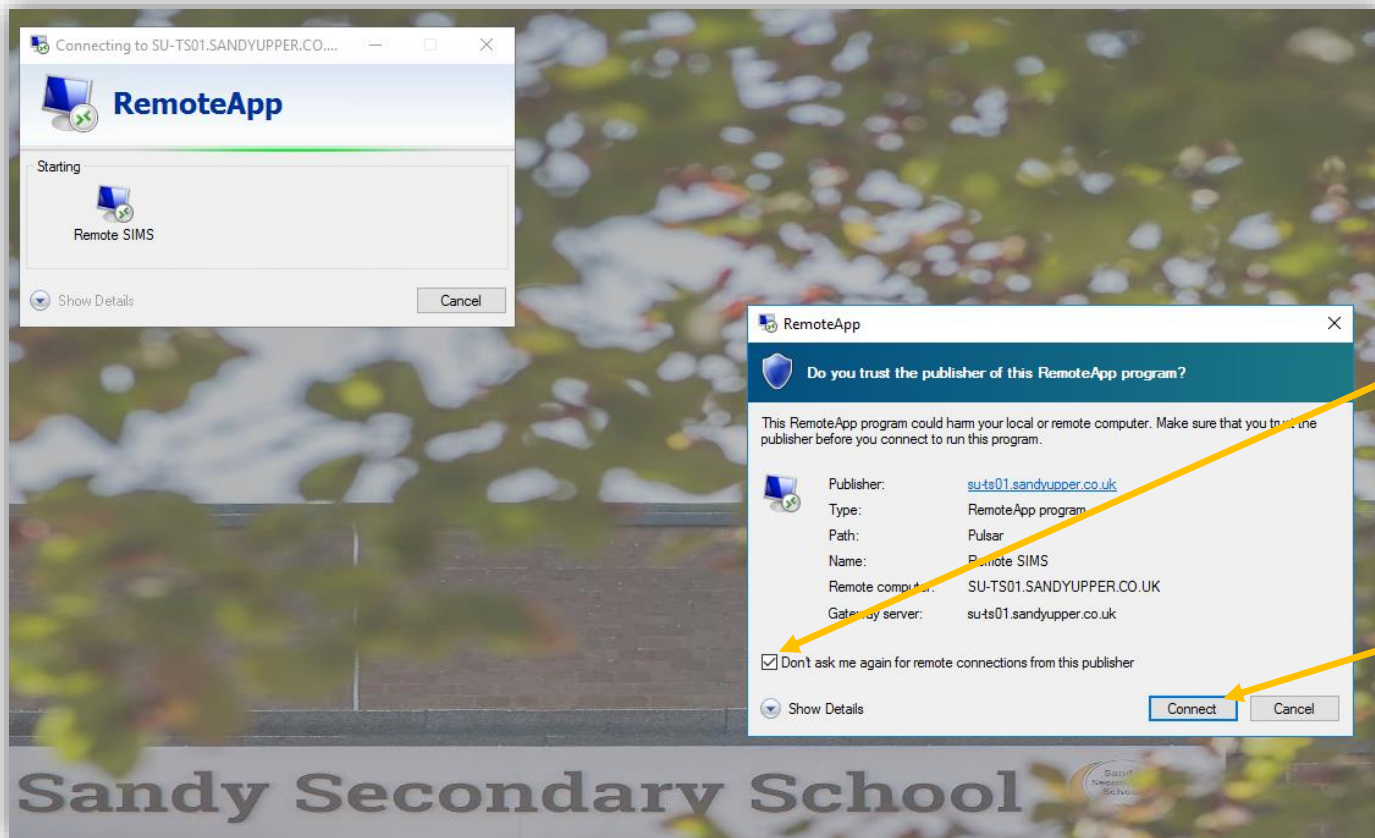
When you sign into the remote access page via the school website you will now see an option for **'Remote SIMS'**

This will allow you to use SIMS from home without having to sign into the Remote Desktop. This is convenient for if you only need access to SIMS and no other applications as it will run as a standalone app on your PC and is quicker than booting into a full virtual desktop.



Internally, you will now also see an icon for **'Remote SIMS'** on your desktop. This can be used as a failover in case you are having issues with SIMS on your machine (ie after an update, or if you are using a student machine where SIMS is not installed)

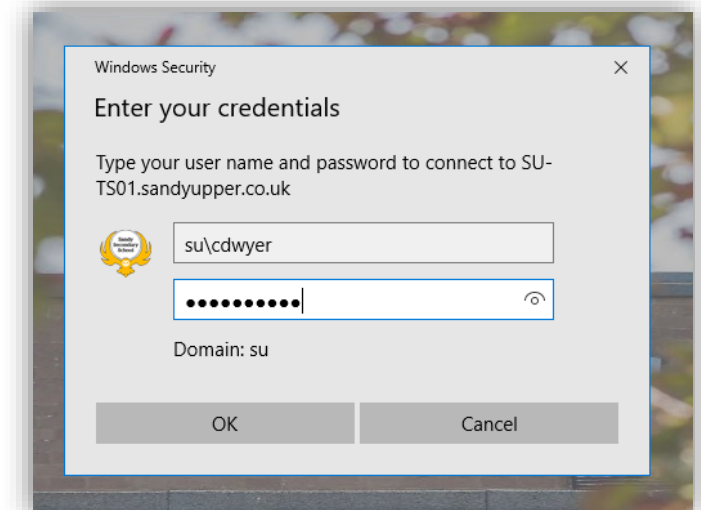
This also means you have access to SIMS from any machine in the school.

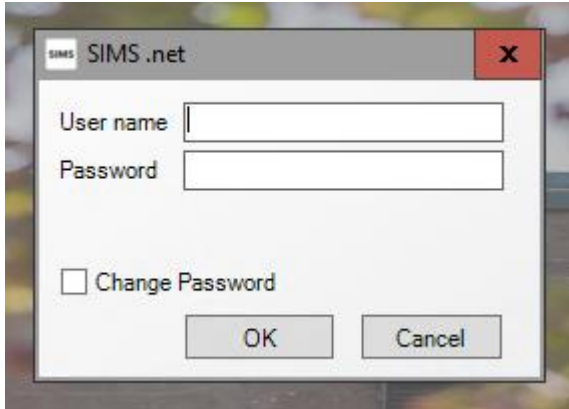


Upon connecting, a window will appear asking if you trust the publisher. Tick the '**Don't ask me again**' box

This option prevents this from re-appearing every time you open the app. Then click '**Connect**'

You will then be prompted for your username and password. This is your network username and password and **NOT** your SIMS username and password. Please enter as follows including the SU\
'**SU\Username**'





SIMS will then load in it's own window as if it was running directly from your machine. This is the case both internally and externally, as seen in the image. Please then sign in with your SIMS username and password.

Known Bug: Sometimes the window doesn't appear. All you have to do is click the SIMS icon in the bottom taskbar to 'minimise' SIMS and then click again to 'maximise' it and the window then appears.